

XNET Installation Steps: Felix



Felix Activation Instructions

Congratulations on your XNET Felix bundle. This page is intended to assist in getting your XNET Felix system deployed and earning XNET tokens.

Step 1. Unboxing Felix.

Your Felix bundle includes:

- Unique xNode gateway, power supply, and (red) patch cable. (1)
- Felix radio and indoor mounting hardware, power supply. (2)
- Gps antenna & cable, and (black) 50 ft (15 meter) Ethernet cable for outdoor deployment of your Felix radio. (3)



↑
(2)



↑
(1)



↑
(3)

Step 2. Connecting components together, powering up.

1. Place your xNode gateway in a **safe, indoor** location. Connect **red** patch cable to ETH0 port one side and to internet connection (router/switch). Then plug one end of the **(black)** 50' radio ethernet cable to ETH1 port. Plug in power supply to the xNode while connected to the internet.
2. Mount your Felix radio unit in its operational location. Route the GPS antenna to a location with good view of the sky (by a window or skylight for example). If the unit cannot receive GPS signal, it may cause issues with token generation.
3. Connect the open end of the 50' ethernet cable (**black** cable) into the ethernet port on the Felix radio (connecting the xnode to the radio).
4. To finish installation, plug power into your Felix radio and make sure **green** lights come on.



Step 3. Site Installation Data collection and submission

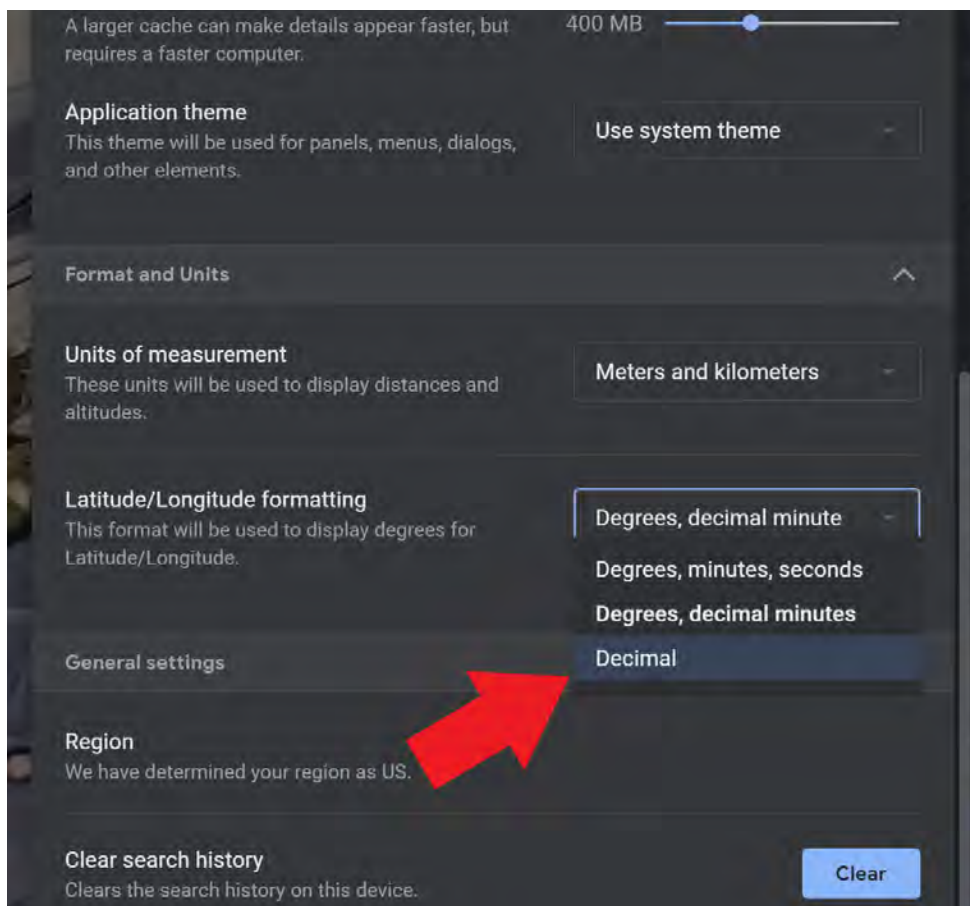
Now that your installation is done, we need to collect some information about it and submit that data for FCC compliance. For the following steps you will need the following:

- Magnetic Compass - either a physical compass, compass app on a mobile device, or virtual compass page on the [NOAA website](#) loaded on your mobile device.
- Inclinator / Angle Finder - a physical angle measuring device, physical inclinometer, or an inclinometer app on a mobile device.
- Camera - to take photos of your installation and photos of the measurement device.

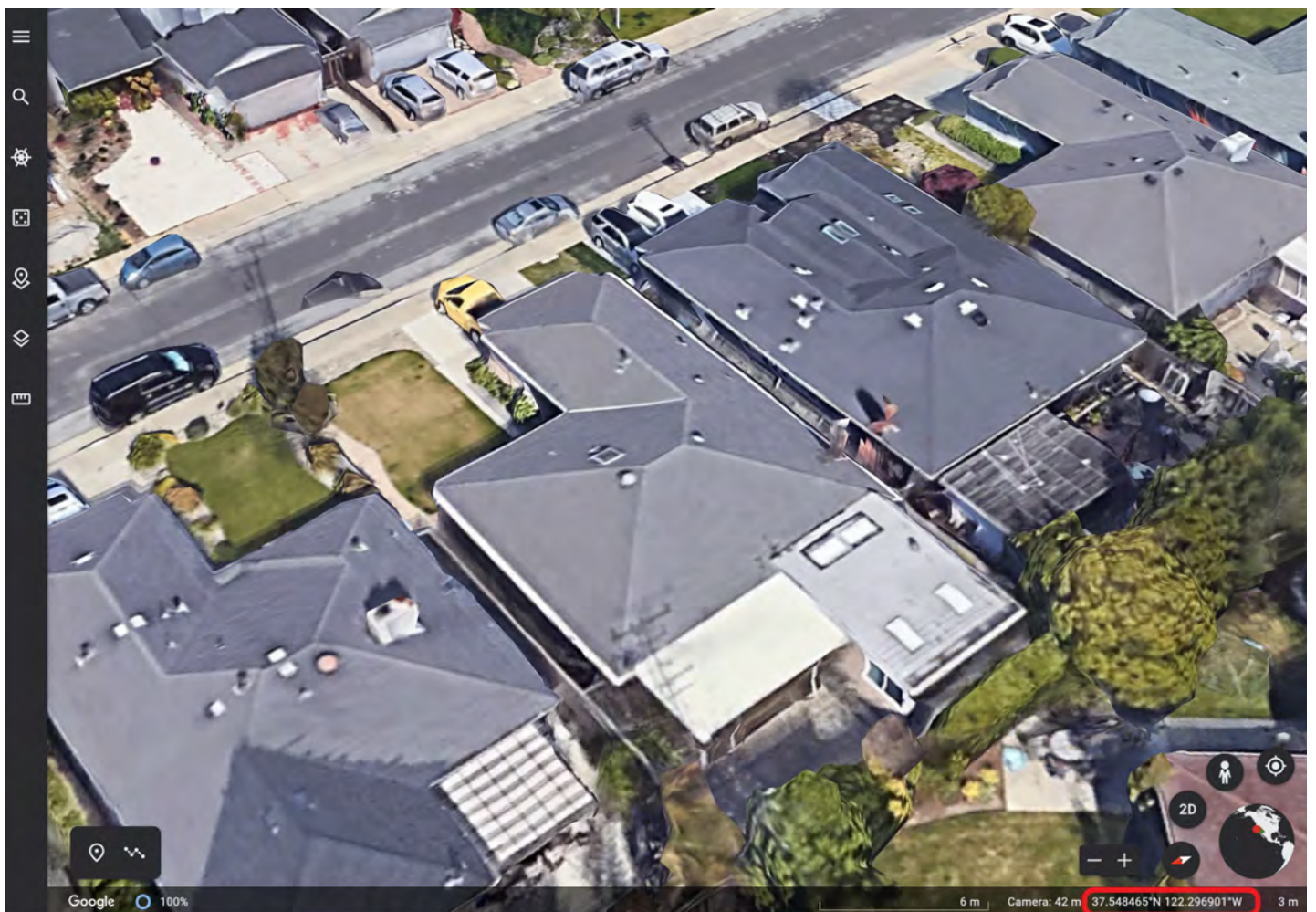
**If you are using your mobile device (phone) to take measurements, you'll need another mobile device or camera to take a picture of it during this process.*

1. Collect GPS location and height data from Google Earth

- a. Go to <https://earth.google.com>
- b. Before we collect information, we need to change how GPS is displayed in Google Earth. Click on the settings button in the top right corner (hamburger button). Then locate Latitude/Longitude formatting, and pull down on the menu to select "Decimal". Then click "Save" at the bottom.



- c. Back at the main screen, click the spyglass icon, in the top right corner, to start a search
- d. Enter the closest street address of your installation
- e. Now zoom and scroll until your installation location is centered in the screen
- f. Place your mouse cursor exactly over the location of your installation.
- g. Without moving your mouse cursor, take a screenshot of Google Earth ("PrtSc" button in Windows, "Shift+Cmd+3" for MacOS)
- h. GPS location example from Google Earth:



i. Where you place your cursor on the Google Earth screen you will get the GPS coordinate (note units in decimal form). Go to setting if units not in decimal degrees.

Note in the bottom right corner the location and height. Where you place your cursor on the Google Earth screen you will get the GPS coordinate (note units in decimal form) and height of location in meters. Go to setting if units not in decimal degrees or meters.

1. Upload all the installation data in the web form using login and password provided via email.
 - a. **<https://www.xnet.company/activate>**
2. **Device:** Select Lucius Serial Number from pull down menu (eg: 1202343265417RB0263).
3. **xNode name:** Select matching xNode name from pull down menu name1-name2-name3-1234 (eg: strong-fast-smart-2763)
4. **Location:** Input GPS coordinate of antenna (37.722315, -122.392791) you found in Google Maps during Step 2.
5. **Metamask Polygon Wallet Address:** Please visit the [MetaMask Setup Guide](#).
6. Finally, click the "Submit" button to finish.
7. **Grow your Tokens** - Track your performance, increase your earnings. Community tools will help enhance network coverage options, opening up opportunities to earn more tokens.